

# Application Notes

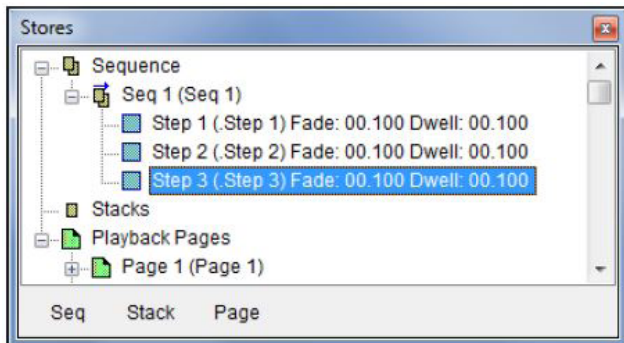


## Using colour palettes in Colour-Tramp

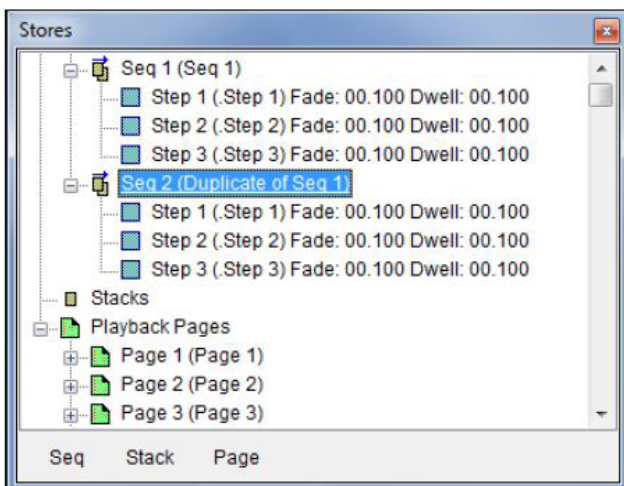
Colour Palettes provide a way to have a master library of colour that is used throughout the show. This greatly speeds programming and tweaking of colours.

This example shows how to duplicate a sequence and then use colour palettes to produce a clone sequence with different colours.

We start by programming a 3 step sequence that contains just red, green and blue.

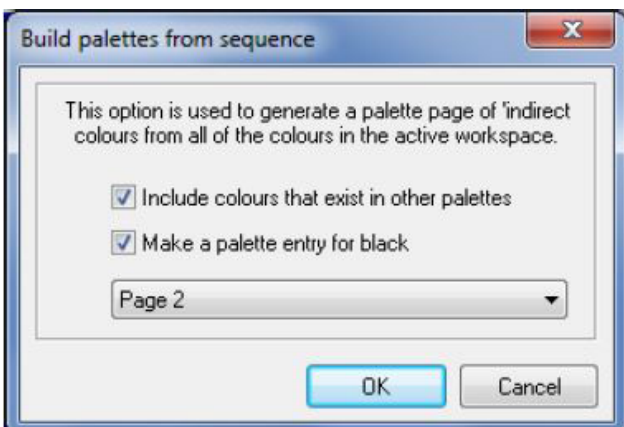


Right click on Seq 1 and select 'Duplicate Sequence'.



Seq 2 is a duplicate of Seq 1.

Right click on Seq 2 and select 'Build Colour Palette for Sequence'. The following dialogue appears:



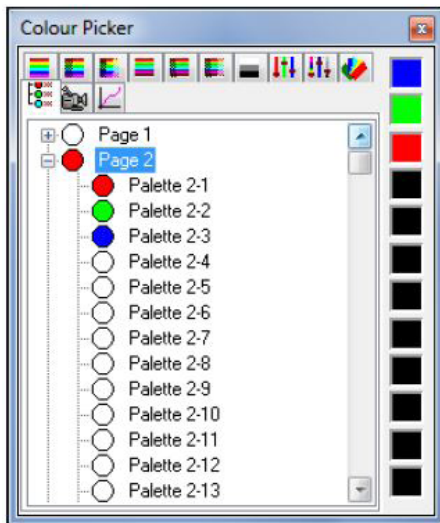
It makes it easier to remember the numbering if you select the same page number as the sequence number, in this instance 2.

Click OK and the colours in Seq 2 will be entered in Colour Palette 2.

# Application Notes

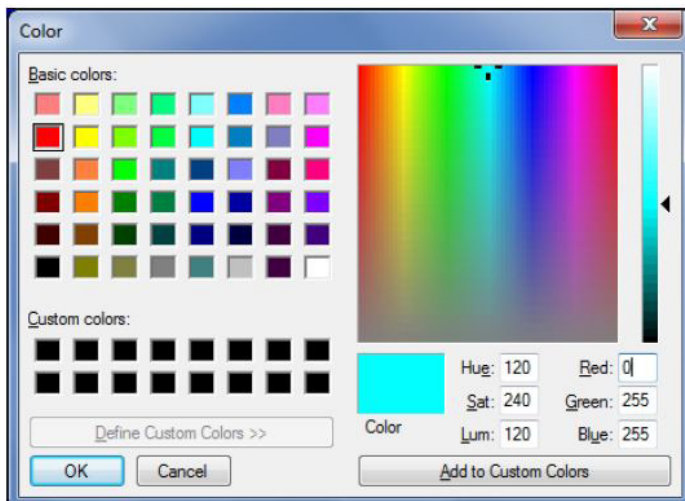


Select the Colour Palette tab, and the following will be seen:



Entries 2-1, 2-2 and 2-3 contain the red, green and blue that we originally programmed in Seq 1.

Now right-click on each colour and select: 'Edit Colour'. The following dialogue is displayed. Edit each colour to select, for example, the secondary colour.



The result will be a colour palette display of:  
Seq 2 is now based on these new colours.

