

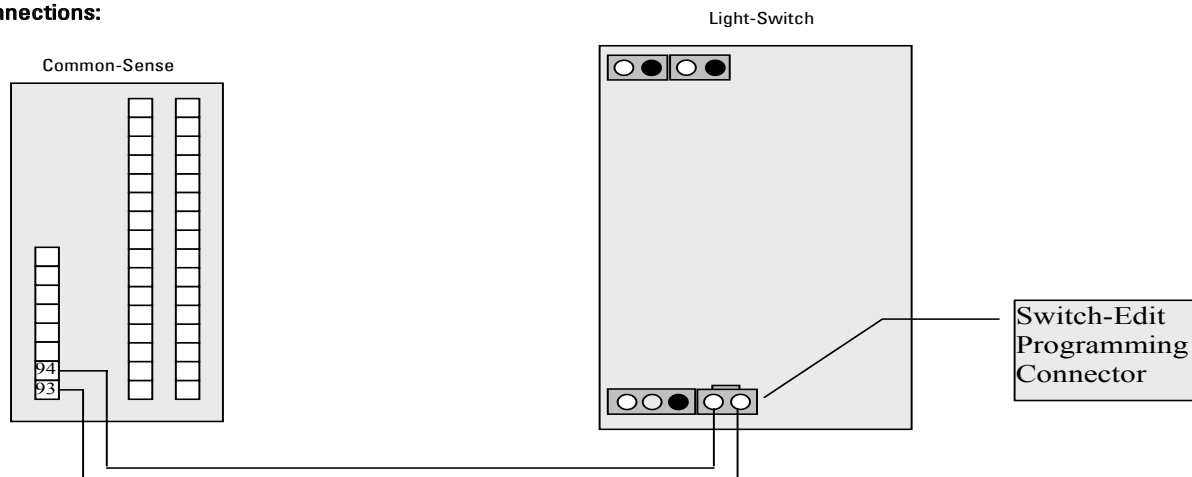
# Application Notes



## Interfacing - Connecting Common-Sense to Light-Switch

This application note describes how to trigger a Light-Switch from a Common-Sense via RS232.

### Connections:

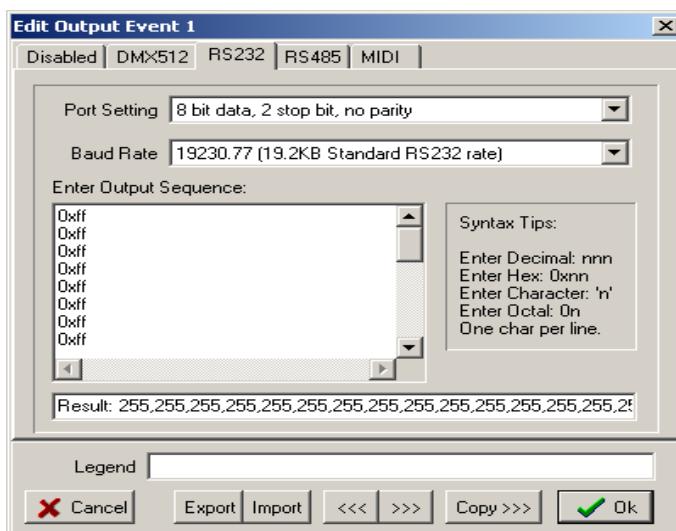


### Commands:

To trigger Light-Switch via RS232 from Common-Sense the following Output Sequence needs to be added to the output event in Switch Edit. Please see table for '0xMM' & '0xNN' values

```
0xff 0xff 0xff 0xff 0xff 0xff 0xff 0xff 0xff 0xff 0xff 0xff
0xff 0xff 0xff 0xff 0xff 0x00 0x02 0x72 0x02 0x72 0x30 0x30
0x30 0x0d 0xMM 0xNN 0x2c 0x03
```

(Please do not use spaces in between the characters above)





## Interfacing - Connecting Common-Sense to Light-Switch

0xMM	0xNN	Function
0x30	0x31	Page A – Cue 1
0x30	0x32	Page A – Cue 2
0x30	0x33	Page A – Cue 3
0x30	0x34	Page A – Cue 4
0x30	0x35	Page A – Cue 5
0x30	0x36	Page A – Cue 6
0x30	0x37	Page A – Cue 7
0x30	0x38	Page A – Cue 8
0x30	0x39	Page B – Cue 1
0x30	0x61	Page B – Cue 2
0x30	0x62	Page B – Cue 3
0x30	0x63	Page B – Cue 4
0x30	0x64	Page B – Cue 5
0x30	0x65	Page B – Cue 6
0x30	0x66	Page B – Cue 7
0x31	0x30	Page B – Cue 8
0x31	0x31	Page C – Cue 1
0x31	0x32	Page C – Cue 2
0x31	0x33	Page C – Cue 3
0x31	0x34	Page C – Cue 4
0x31	0x35	Page C – Cue 5
0x31	0x36	Page C – Cue 6
0x31	0x37	Page C – Cue 7
0x31	0x38	Page C – Cue 8
0x31	0x39	Page D – Seq 1
0x31	0x61	Page D – Seq 2
0x31	0x62	Page D – Seq 3
0x31	0x63	Page D – Seq 4
0x31	0x64	Page D – Seq 5
0x31	0x65	Page D – Seq 6
0x31	0x66	Start / Stop
0x32	0x30	Direction