



Colour-Tramp RDM

Category

D) Lighting Controllers & Media Convertors

Description

An intelligent solution for Real Time monitoring of RDM installations



System Features

- Real Time RDM Monitor
- Upto 43,000 RDM devices
- PC application
- Autoload Function
- Can work alongside existing systems
- RDM over Art-Net
- Log files

PC Specification

- Windows 8 (32 or 64 bit)
- Windows 7 (32 or 64 bit)
- Upgrades: Free upgrades via www.artisticlicence.com
- DMX-Workshop is required

Tools and Wizards

- Grid Layout Wizard
- RDM Patching, Visual RDM Patching
- Visual Representation of Sensor State
- Email Report Scheduler

Run-Time Features

- On-Screen Diagnostics
- Remote Email Notification
- Daily Email Reports
- Live view of individual fixture details
- Network Diagnostic Tools (DMX-Workshop)
- Universe overlay
- Fixture loss detection
- External trigger capability

Control

- Input Protocol:
 - Art-Net Macros / DMX
- Control: Upto 43,000 RDM devices
- Output Protocol:
 - Art-Net 3
 - SMTP Emails

Input Triggers

- Routine Tasks are triggered by
 - Remote trigger values
 - Time / date
 - Received emails
 - Internal Variables
- Alert emails are triggered by
 - RDM Sensors Out of Valid Range

Package Contents

- Colour-Tramp RDM USB Security Key
- Software CD
- User Guide

Ordering Info

Product Code:

Colour-Tramp RDM

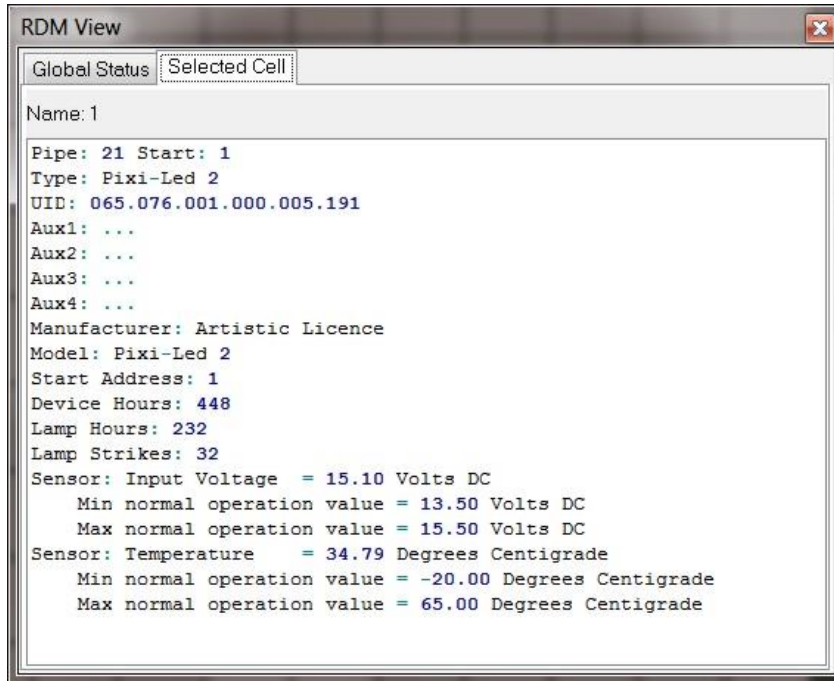
Accessories (not included):

Colour-Tramp PC

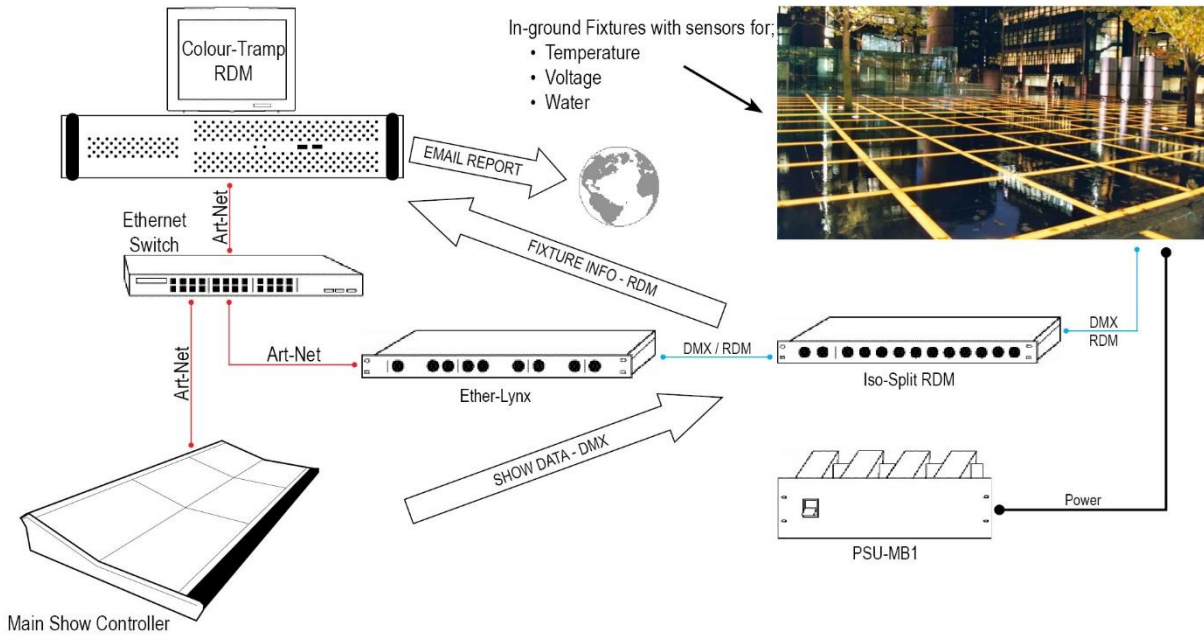
Art-Net to DMX / RDM Converters



Screenshot



Application Drawing



Artistic Licence Engineering Ltd

Studio 1, Spectrum House
32-34 Gordon House Road
London, NW5 1LP
United Kingdom

Telephone +44 (0)20 8863 4515
Fax +44 (0)20 8426 0551

Email: Sales@ArtisticLicence.com
www.ArtisticLicence.com

Customer support and knowledge base:
www.ArtisticLicence.com/support.html

All products are covered from date of purchase by a two-year return to base warranty.

Due to our policy of continuing product improvement, specifications are subject to change without notice.

Artistic Licence

Colour-Tramp RDM