



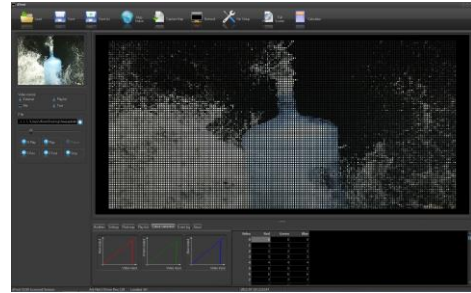
dVnet, dVnet pro & dVnet extreme

Category

D) Lighting Controllers

Description

A Digital Video to Network converter housed in a 19-inch rack case. Capable of converting live video from a HDMI source or video files.



Mechanical

- Housing: 19" 2U Rack Enclosure
- Material: Metal
- Height: 2RU (88mm)
- Depth: 402mm
- Width: 19" Rack (483mm inc ears)
- Weight: 3.4kg
- Mounting: 19" Rack Mounting
- Country of Manufacturer: The United Kingdom

Control

- Control:
 - Standard: 20,000 pixels, 50Hz HDMI input up to 1920x1080i interlaced.
 - Pro: 20,000 pixels, 50/60Hz HDMI input up to 1920x1080p progressive.
 - Extreme: 50,000 pixels, 50/60Hz HDMI input up to 1920x1080p progressive.
- Input Protocols: HDMI / Art-Net DMX (Remote Console Mode)
- Input Connector: Standard HDMI Connector
- Output Protocols: Art-Net / sACN E1.31 / KiNet (D/P)
- Output Connector: RJ45 (Gigabit)
- Other:
 - USB x 6 (Rear) / USB x 2 (Front)
 - HDMI Output / DVI Output
 - 3.5mm Jack for Sound Output

Electrical

- Input Voltage: 90V-250V AC (Switchable)
- Input Connector: IEC C13 Male
- Input Power (max): 500W
- Duty Cycle: 80% @ 25°C
- Mains Earthing: Case connected to Mains Earth

Isolation / Protection

- Isolation:
 - Ethernet Isolated to 1 kV
- Protection:
 - Fused IEC Mains Lead

Environmental

- Operating Temperature: 0 to 40°C
- Storage Temperature: -10 to +50°C
- Operating Relative Humidity (max): 80% Non-Condensing
- IP Rating: IP20 Indoor Use Only
- Certification: CE FCC, WEEE, RoHS
- Warranty: 2 Year (Return to Base)

Package Contents

- dVnet
- User Guide
- IEC Mains Lead

User Interface / Indication

- Connections:
 - (1) RJ45 Art-Net / sACN / KiNet
 - (1) IEC C13 Male Mains Input
 - (1) HDMI Input
- User Interface:
 - Main Window User Interface
 - Video Select Source, Playlist Manager
 - Video Effect Function, Colour Correction
 - Remote Group Control of Pixels via ArtDMX Universe
- Indication: Real Time Visulation

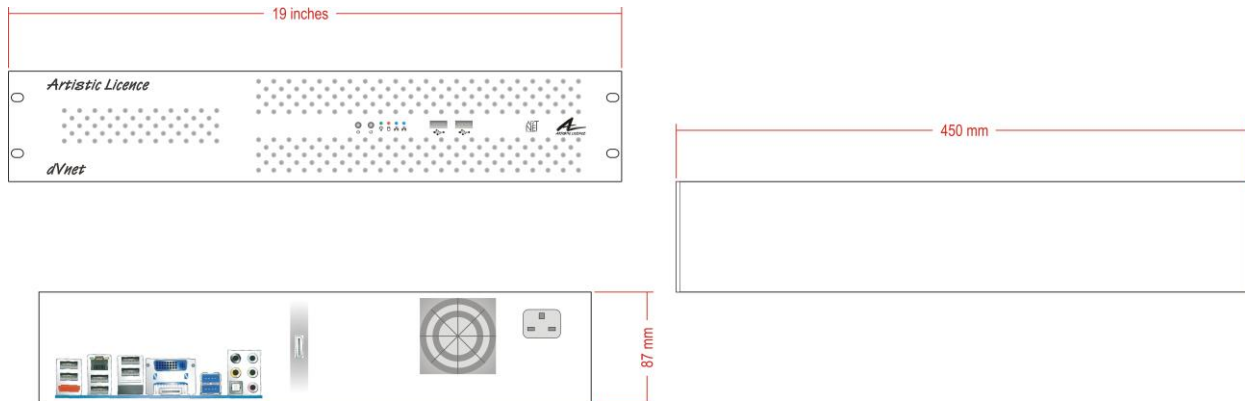
Ordering Info

Product Code:
 dVnet
 dVnet pro
 dVnet extreme
 Accessories (not included):
 Data-Lynx O/P
 Ether-Lynx II
 Art-Switch PoE4

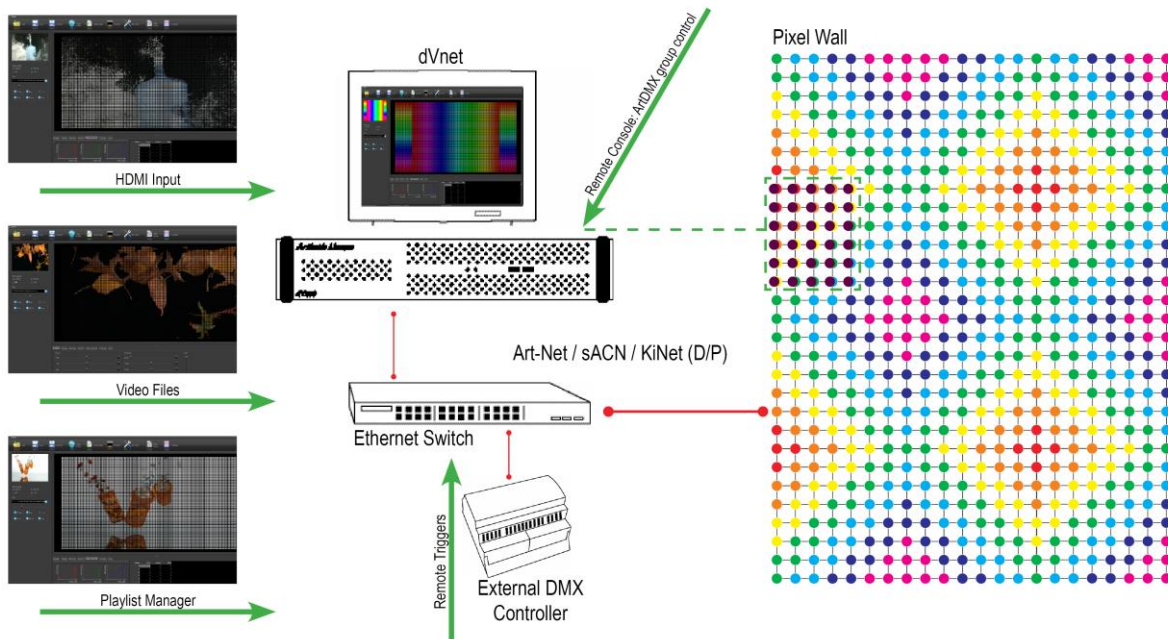
Artistic Licence



Mounting Drawing



Wiring Drawing



Artistic Licence Engineering Ltd

Studio 1, Spectrum House
32-34 Gordon House Road
London, NW5 1LP
United Kingdom

Telephone: +44 (0)20 8863 4515
Fax: +44 (0)20 8426 0551
Email: Sales@ArtisticLicence.com
www.ArtisticLicence.com

Customer support and knowledge base:
www.ArtisticLicence.com/support.html

All products are covered from date of purchase by a two-year return to base warranty.



Due to our policy of continuing product improvement, specifications are subject to change without notice.

Artistic Licence

dVnet, dVnet pro & dVnet extreme