

Net-View

User's Guide



Artistic Licence Engineering Ltd

Manual Revision V1.1 for Software Revision V1.1

PRODUCT REGISTRATION FORM

Product: **Net-View**

Version No. V1.1

Serial No.

Date Purchased:

Sales Authorisation No.

PIN Number:

Supplier:

Pocket PC Device:

Name:

Company Name:

Address:

Post/Zip Code:

Phone No.

Email:

(Address for the latest versions of Net-View)

Comments:

Please return to: Artistic Licence Engineering Ltd.

24 Forward Drive, Christchurch Avenue, Harrow, Middlesex HA3 8NT. England.

Fax: +44 (0) 20 84 26 05 51

C O N T E N T S

PRODUCT REGISTRATION FORM	5
CONTENTS	7
INTRODUCTION	8
OVERVIEW.....	8
PHYSICAL OUTPUT.....	8
ART-NET.....	8
INSTALLATION.....	9
SOFTWARE INSTALLATION.....	9
SOFTWARE REGISTRATION.....	10
ART-NET.....	11
THE MENUS	15
OVERVIEW.....	15
OPTIONS MENU	15
ENUMERATE.....	15
SETUP.....	15
EXIT.....	15
RX MENU.....	15
DATA.....	15
MAX/MIN	16
SCOPE.....	16
TX MENU.....	16
DYNAMIC.....	16
MEMORY.....	17
CONFIG MENU.....	17
CONFIGURATION.....	17
PROPERTIES.....	17
ROUTING.....	18
BACK.....	18
CONVERSION TABLES	19

I N T R O D U C T I O N

OVERVIEW

As the number of Art-Net products and network installations increases, so does the need to be able to perform testing, control and programming easily on these networks. Net-View, the new software application from Artistic Licence, has been developed to meet these needs.

To check for future software releases and firmware updates, go to:

www.ArtisticLicence.com/Download.htm

PHYSICAL OUTPUT

Net-View can be used with any Ethernet ready Pocket PC, for example a Compaq iPaq utilising a wireless Ethernet PCMCIA adaptor.

ART-NET

Art-Net is a new standard in Ethernet communication. The protocol is a public domain standard that is supported by a number of vendors including Artistic Licence, ADB, MA Lighting, Goddard Design Co and Doug Fleenor Design.

Net-View can output Art-Net via a 10BaseT network card installed in your Pocket PC. When configured for Art-Net operation, Net-View can control, test and configure any and all nodes connected to this network.

INSTALLATION

Net-View is a Pocket PC application specifically designed to work on any Pocket PC device.

You will need to have a Pocket PC device with an Ethernet adaptor, configured to work on an Art-Net network. Also you will need a desktop PC with Microsoft ActiveSync installed.

Software Installation

Net-View is supplied on the Artistic Licence CD. To install use the following procedure:

- Shutdown any applications running on your Pocket PC device
- Connect your Pocket PC device and ensure Microsoft ActiveSync is running
- Insert the CD in drive.
- Wait for CD to start, then select 'Enter CD'.
- Select the 'Software' button.
- Select the 'Net-View' button.
- Microsoft ActiveSync Program Manager will then guide you through the remainder of the procedure.
- Follow the registration procedure below to unlock your version of Net-View

If you are installing an upgrade, we recommend that you backup all Net-View data first. Please check the Web-Site for upgrades.

The installation procedure is identical for installation of the demonstration version and the licensed version.

Software
Registration

Net-View is copy protected and must be registered prior to use of all features. Without registration, you will be able to see the network but all the menu options are disabled.

A PIN number is required to register the software. To obtain a PIN number you will need to email the sales authorisation number, found in the front of the manual, and the serial number that Net-View provides to Support@ArtisticLicence.com. You will then receive a PIN number that will enable all the menu options.

To register Net-View simply select the menu 'Options' -> 'Setup'.



The serial number is a 16-digit decimal number.

Type the PIN number, into the box provided, without any '-' or spaces and click the Register button.

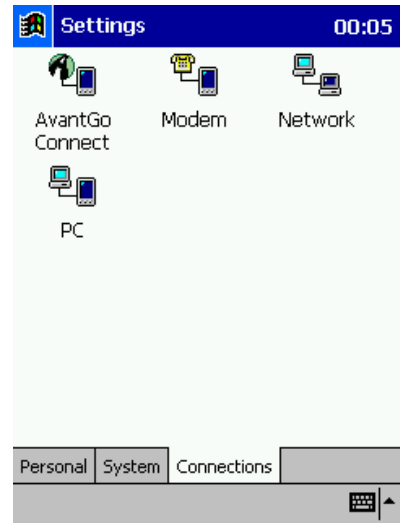
All the menu options will now be enabled allowing you to use the full capabilities of Net-View.



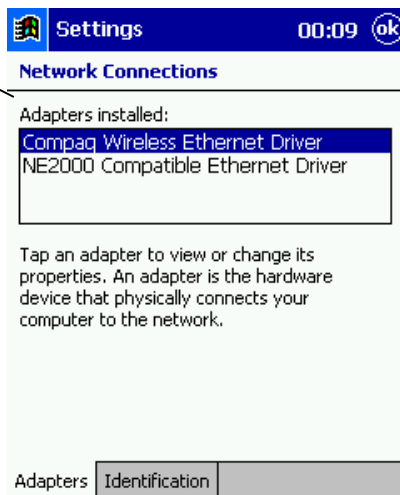
Please ensure that you configure your network card to comply with Art-Net, procedure shown below.

Art-Net To use Net-View with an Art-Net device, such as Ether-Lynx Down-Lynx or Net-Lynx O/P, you must configure the device's Ethernet card. It is necessary to set two parameters, the IP address and the Subnet Mask.

These settings are adjusted in the individual adaptor settings. 'Settings' -> 'Connections' -> 'Network'.



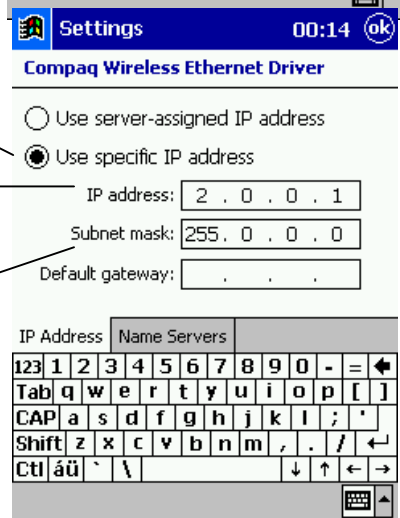
Select the card you are using from the list that is provided.



Select the radio button marked 'Specify an IP Address'.

Type the number 2.0.0.1 into the first box.

Type the number 255.0.0.0 into the second box.



The display should be as shown

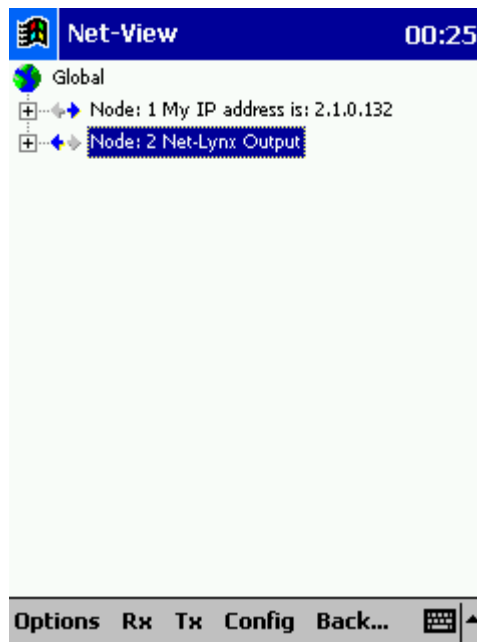
Remove the adaptor and re-insert so that the settings will be implemented.

T H E C O N C E P T S

OVERVIEW

This section is intended for those users who prefer to just 'dig in' to the software, and only pick up the manual for reference!

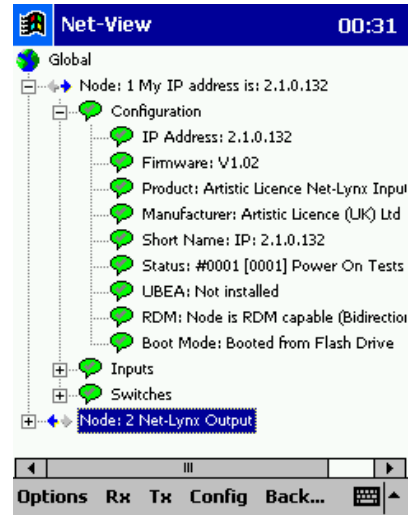
The main screen of Net-View is a Tree-View of the network it is connected to. From here you can view all the individual nodes and their settings and manipulate them with the help of the menu options found at the bottom of the screen.



Using the Drop-List icon, [+], you can discover more information about a specific node. The information is arranged into four sub-headings:-

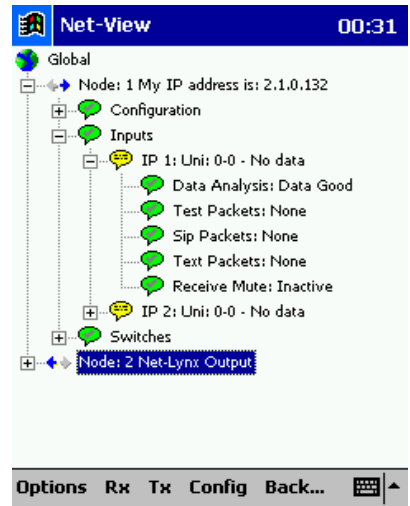
Configuration

The operational settings of the node



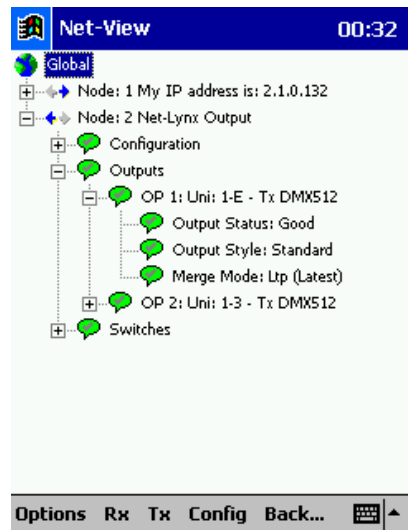
Inputs

The individual input status of the node (if applicable)



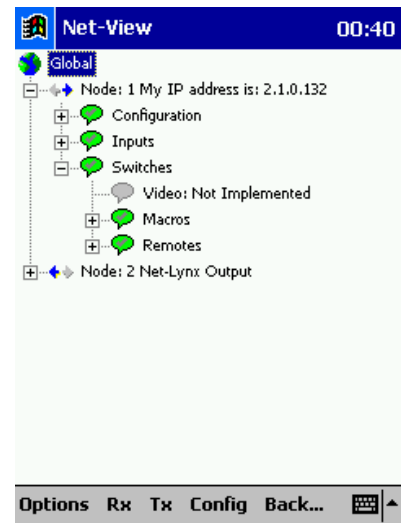
Outputs

The individual output status of the node (if applicable)



Switches

Video, Macro & Remote information of the node



Once an item has been selected from the tree the menu options are used to perform tasks on the specified item. For example you can select the Global item at the top of the Tree-View and then the menu option, 'Config', 'Properties'. This would Config the entire networks properties.

The selection items are:-

- i. Global selection
- ii. Individual Node
- iii. Individual Input/Output

T H E M E N U S

OVERVIEW

Once an item from the Tree-View has been selected the menu options are used to perform a task on the selected node/nodes.

OPTIONS

Net-View's configuration operations:

Enumerate

This menu option is used to refresh the Tree-View display. It sends out an ArtPoll to find what nodes are on the network and displays the results.

Setup

Net-View set-up options:-

- i. Register the Software
- ii. Reset all the preset values
- iii. Select the language used

Exit

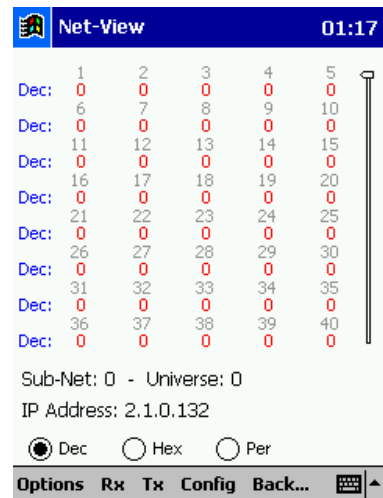
Exit the program. Net-View will save all the user configurable settings.

RX

Display the received DMX

Data

Displays the received DMX within a table. The values can be display in either Decimal, Hexadecimal or percentage values.

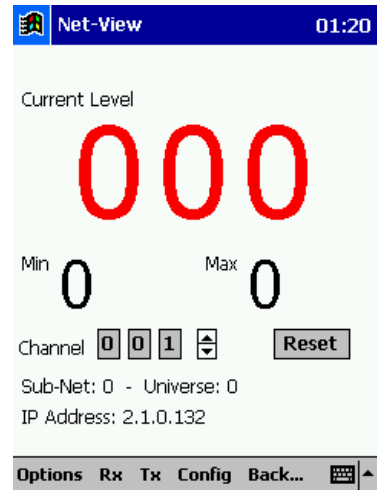


The screenshot shows the Net-View application window. The title bar reads "Net-View" and the system clock shows "01:17". The main display area contains a table with 5 columns and 16 rows of data. Each row starts with a label "Dec:" followed by five numerical values. All values in the table are "0". Below the table, the application displays "Sub-Net: 0 - Universe: 0" and "IP Address: 2.1.0.132". At the bottom, there are three radio buttons for "Dec" (selected), "Hex", and "Per". A menu bar at the very bottom includes "Options", "Rx", "Tx", "Config", "Back...", and a keyboard icon.

1	2	3	4	5
Dec: 0	0	0	0	0
6	7	8	9	10
Dec: 0	0	0	0	0
11	12	13	14	15
Dec: 0	0	0	0	0
16	17	18	19	20
Dec: 0	0	0	0	0
21	22	23	24	25
Dec: 0	0	0	0	0
26	27	28	29	30
Dec: 0	0	0	0	0
31	32	33	34	35
Dec: 0	0	0	0	0
36	37	38	39	40
Dec: 0	0	0	0	0

Max/Min

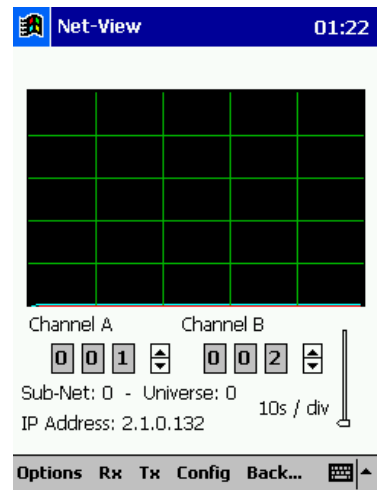
Displays the current, max and min value of a single channel.



Scope

A line-chart of two channels.

The time per division can be selected

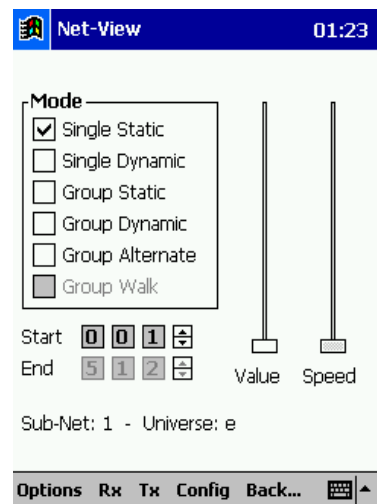


TX

Transmit DMX to an output node.

Dynamic

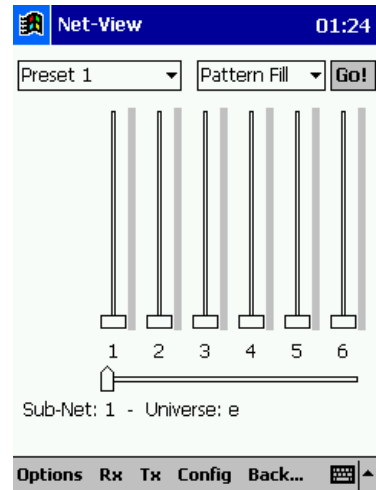
Transmitting dynamic DMX to an output node. Either single or group channels can be transmitted.



Memory

Transmitting preset values of DMX to an output node. There is a choice of ten presets available that are saved upon exit of Net-View.

Each preset can be given a name and set to pre-programmed values.

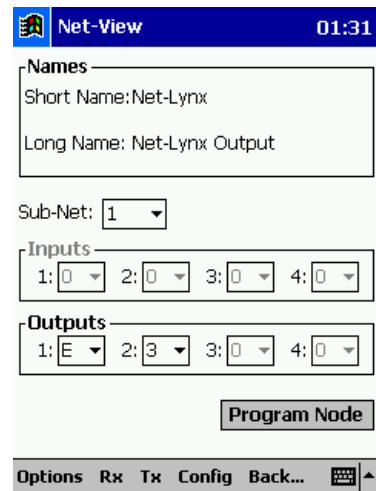


CONFIG

Configuration of the Art-Net network and individual nodes

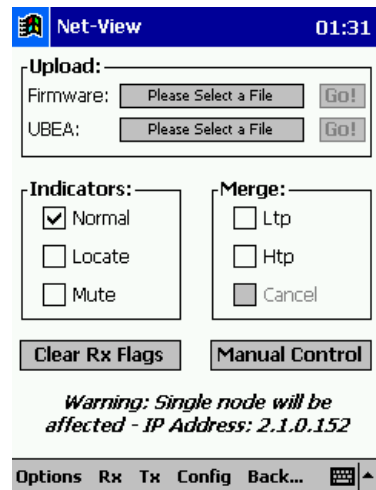
Configuration

Configuration of an individual node. You can set the node's name, universe and sub-net values.



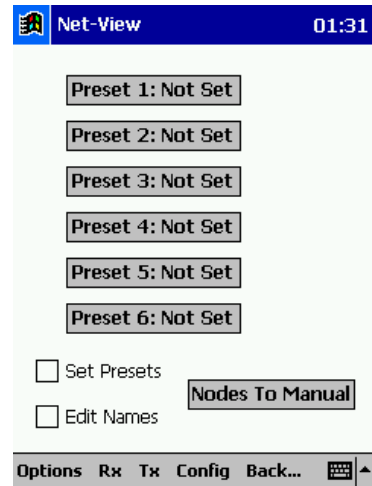
Properties

Setting the properties of the entire network or an individual node.



Routing

Setting the networks routing values. This option is used to set the universe and sub-net values of the entire network. With the click of one button you can re-direct all the DMX data.



BACK

To return to the network view from any screen.

C O N V E R S I O N T A B L E S

Dec	Hex	Binary	Dec	Hex	Binary	Dec	Hex	Binary
0	00	0000 0000	32	20	0010 0000	64	40	0100 0000
1	01	0000 0001	33	21	0010 0001	65	41	0100 0001
2	02	0000 0010	34	22	0010 0010	66	42	0100 0010
3	03	0000 0011	35	23	0010 0011	67	43	0100 0011
4	04	0000 0100	36	24	0010 0100	68	44	0100 0100
5	05	0000 0101	37	25	0010 0101	69	45	0100 0101
6	06	0000 0110	38	26	0010 0110	70	46	0100 0110
7	07	0000 0111	39	27	0010 0111	71	47	0100 0111
8	08	0000 1000	40	28	0010 1000	72	48	0100 1000
9	09	0000 1001	41	29	0010 1001	73	49	0100 1001
10	0A	0000 1010	42	2A	0010 1010	74	4A	0100 1010
11	0B	0000 1011	43	2B	0010 1011	75	4B	0100 1011
12	0C	0000 1100	44	2C	0010 1100	76	4C	0100 1100
13	0D	0000 1101	45	2D	0010 1101	77	4D	0100 1101
14	0E	0000 1110	46	2E	0010 1110	78	4E	0100 1110
15	0F	0000 1111	47	2F	0010 1111	79	4F	0100 1111
16	10	0001 0000	48	30	0011 0000	80	50	0101 0000
17	11	0001 0001	49	31	0011 0001	81	51	0101 0001
18	12	0001 0010	50	32	0011 0010	82	52	0101 0010
19	13	0001 0011	51	33	0011 0011	83	53	0101 0011
20	14	0001 0100	52	34	0011 0100	84	54	0101 0100
21	15	0001 0101	53	35	0011 0101	85	55	0101 0101
22	16	0001 0110	54	36	0011 0110	86	56	0101 0110
23	17	0001 0111	55	37	0011 0111	87	57	0101 0111
24	18	0001 1000	56	38	0011 1000	88	58	0101 1000
25	19	0001 1001	57	39	0011 1001	89	59	0101 1001
26	1A	0001 1010	58	3A	0011 1010	90	5A	0101 1010
27	1B	0001 1011	59	3B	0011 1011	91	5B	0101 1011
28	1C	0001 1100	60	3C	0011 1100	92	5C	0101 1100
29	1D	0001 1101	61	3D	0011 1101	93	5D	0101 1101
30	1E	0001 1110	62	3E	0011 1110	94	5E	0101 1110
31	1F	0001 1111	63	3F	0011 1111	95	5F	0101 1111

Dec	Hex	Binary	Dec	Hex	Binary	Dec	Hex	Binary
96	60	0110 0000	128	80	1000 0000	160	A0	1010 0000
97	61	0110 0001	129	81	1000 0001	161	A1	1010 0001
98	62	0110 0010	130	82	1000 0010	162	A2	1010 0010
99	63	0110 0011	131	83	1000 0011	163	A3	1010 0011
100	64	0110 0100	132	84	1000 0100	164	A4	1010 0100
101	65	0110 0101	133	85	1000 0101	165	A5	1010 0101
102	66	0110 0110	134	86	1000 0110	166	A6	1010 0110
103	67	0110 0111	135	87	1000 0111	167	A7	1010 0111
104	68	0110 1000	136	88	1000 1000	168	A8	1010 1000
105	69	0110 1001	137	89	1000 1001	169	A9	1010 1001
106	6A	0110 1010	138	8A	1000 1010	170	AA	1010 1010
107	6B	0110 1011	139	8B	1000 1011	171	AB	1010 1011
108	6C	0110 1100	140	8C	1000 1100	172	AC	1010 1100
109	6D	0110 1101	141	8D	1000 1101	173	AD	1010 1101
110	6E	0110 1110	142	8E	1000 1110	174	AE	1010 1110
111	6F	0110 1111	143	8F	1000 1111	175	AF	1010 1111
112	70	0111 0000	144	90	1001 0000	176	B0	1011 0000
113	71	0111 0001	145	91	1001 0001	177	B1	1011 0001
114	72	0111 0010	146	92	1001 0010	178	B2	1011 0010
115	73	0111 0011	147	93	1001 0011	179	B3	1011 0011
116	74	0111 0100	148	94	1001 0100	180	B4	1011 0100
117	75	0111 0101	149	95	1001 0101	181	B5	1011 0101
118	76	0111 0110	150	96	1001 0110	182	B6	1011 0110
118	77	0111 0111	151	97	1001 0111	183	B7	1011 0111
119	78	0111 1000	152	98	1001 1000	184	B8	1011 1000
120	79	0111 1001	153	99	1001 1001	185	B9	1011 1001
121	7A	0111 1010	154	9A	1001 1010	186	BA	1011 1010
122	7B	0111 1011	155	9B	1001 1011	187	BB	1011 1011
123	7C	0111 1100	156	9C	1001 1100	188	BC	1011 1100
124	7D	0111 1101	157	9D	1001 1101	189	BD	1011 1101
125	7E	0111 1110	158	9E	1001 1110	190	BE	1011 1110
126	7F	0111 1111	159	9F	1001 1111	191	BF	1011 1111

Dec	Hex	Binary	Dec	Hex	Binary
192	C0	1100 0000	224	E0	1110 0000
193	C1	1100 0001	225	E1	1110 0001
194	C2	1100 0010	226	E2	1110 0010
195	C3	1100 0011	227	E3	1110 0011
196	C4	1100 0100	228	E4	1110 0100
197	C5	1100 0101	229	E5	1110 0101
198	C6	1100 0110	230	E6	1110 0110
199	C7	1100 0111	231	E7	1110 0111
200	C8	1100 1000	232	E8	1110 1000
201	C9	1100 1001	233	E9	1110 1001
202	CA	1100 1010	234	EA	1110 1010
203	CB	1100 1011	235	EB	1110 1011
204	CC	1100 1100	236	EC	1110 1100
205	CD	1100 1101	237	ED	1110 1101
206	CE	1100 1110	238	EE	1110 1110
207	CF	1100 1111	239	EF	1110 1111
208	D0	1101 0000	240	F0	1111 0000
209	D1	1101 0001	241	F1	1111 0001
210	D2	1101 0010	242	F2	1111 0010
211	D3	1101 0011	243	F3	1111 0011
212	D4	1101 0100	244	F4	1111 0100
213	D5	1101 0101	245	F5	1111 0101
214	D6	1101 0110	246	F6	1111 0110
215	D7	1101 0111	247	F7	1111 0111
216	D8	1101 1000	248	F8	1111 1000
217	D9	1101 1001	249	F9	1111 1001
218	DA	1101 1010	250	FA	1111 1010
219	DB	1101 1011	251	FB	1111 1011
220	DC	1101 1100	252	FC	1111 1100
221	DD	1101 1101	253	FD	1111 1101
222	DE	1101 1110	254	FE	1111 1110
223	DF	1101 1111	255	FF	1111 1111

Artistic Licence

© Artistic Licence Engineering Ltd. 1994
24 Forward Drive
Christchurch Avenue
Harrow
Middlesex
England
HA3 8NT
Tel: +44 (0)20 88 63 45 15
Fax: +44 (0)20 84 26 05 51
Email: Sales@ArtisticLicence.com



The information contained in this document is subject to change without notice. Artistic Licence Engineering Ltd. makes no warranty of any kind with regard to this material, including, but not limited to, the implied warranties of fitness for a particular purpose.

Artistic Licence Engineering Ltd. shall not be liable for errors contained herein or for incidental or consequential damages in connection with the furnishing, performance or use of this material.

All trademarks are acknowledged.