

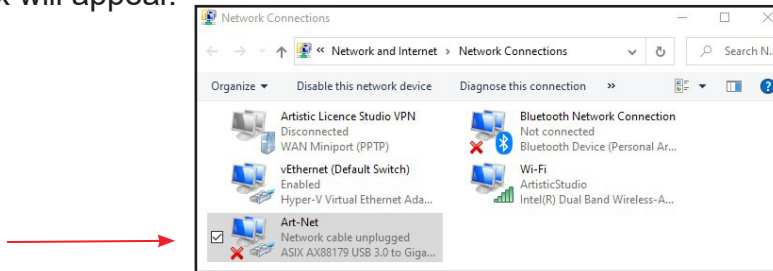


Setting an IP Address on Windows

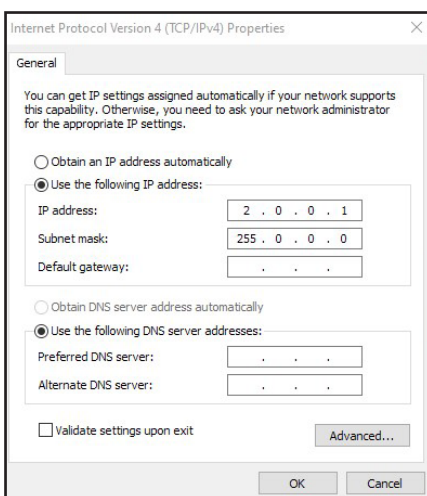
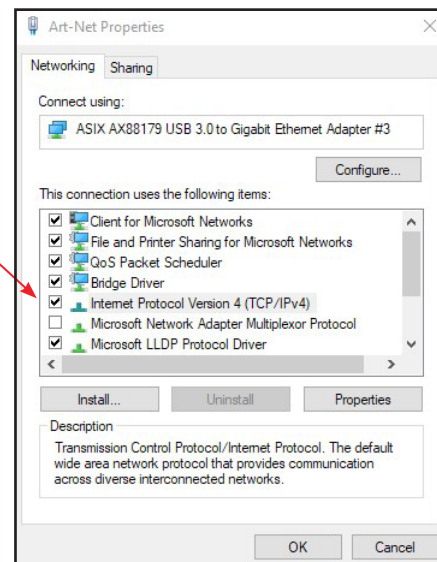
This application note describes how to set an IP address of a PC running Windows 10 so that it can be used on a standard Art-Net Network.

Open the **Control Panel > Network and Sharing Center > Change adapter settings**

Select the correct adaptor from the list and right click over the icon. Click on **Properties** and a dialog box will appear.



From the list select **Internet Protocol (TCP / IP) v4** and click **Properties**



Select: **Use the following IP address**

Use the settings below:

IP Address: 2.0.0.1

Subnet Mask: 255.0.0.0

Default Gateway: *Leave blank*

Select: **Use the following DNS server addresses**

Use the settings below:

Preferred DNS server: *Leave blank*

Alternate DNS server: *Leave blank*

Click **OK** then **Close**. The computer may take up to a minute for the new settings to be implemented.

