



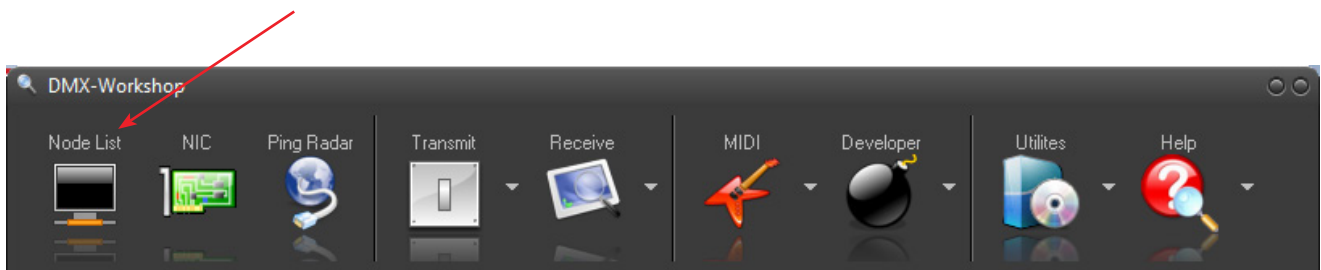
## DMX & RDM: Setting a start address with DMX-Workshop

### Equipment required:

- PC running DMX-Workshop
- Artistic Licence Art-Net to DMX/RDM converter (e.g. Art-Lynx O/P or Net Lynx O/P)

### Procedure:

1. Connect the Art-Net to DMX/RDM converter to the PC running DMX-Workshop
2. Connect the RDM device that needs to be addressed to one of the outputs of the converter
3. Run the DMX-Workshop application ensuring that the PC has the correct type of IP address, i.e. 2.x.x.x (Sub-Net 255.0.0.0)
4. Click the Node List button in the menu bar (see Figure 1)



**Figure 1:** DMX-Workshop main menu

5. This will display a new window containing a list of Art-Net nodes (ensure that the Auto-Refresh box is ticked). See Figure 2
6. Expand the details to see the RDM device on the output of the converter. Right-click on the RDM device and select 'Set DMX512 Start Address'.
7. Type in the new address and click 'Programme' (see Figure 3)
8. The new start address will be programmed and the list view will update after a few seconds (assuming 'Auto-Refresh' is enabled)

### Troubleshooting:

1. If the node does not appear, check the IP address of the computer (see step 3 above). If the IP address of the computer is set incorrectly, the node may still appear in the status list but DMX-Workshop will not be able to control it. If this happens, a symbol will appear in the list to show the conflict.
2. If the computer firewall is on, or RDM is disabled, the node list will display 'searching' under various attributes as shown in Figure 4. To fix the former, check the firewall settings on the PC control panel. To fix the latter, click the NIC button in the menu bar (see Figure 1). Then select the Configuration tab and ensure that 'Enable RDM communication' is checked (see Figure 5).

# Application Notes



## DMX & RDM: Setting a start address with DMX-Workshop

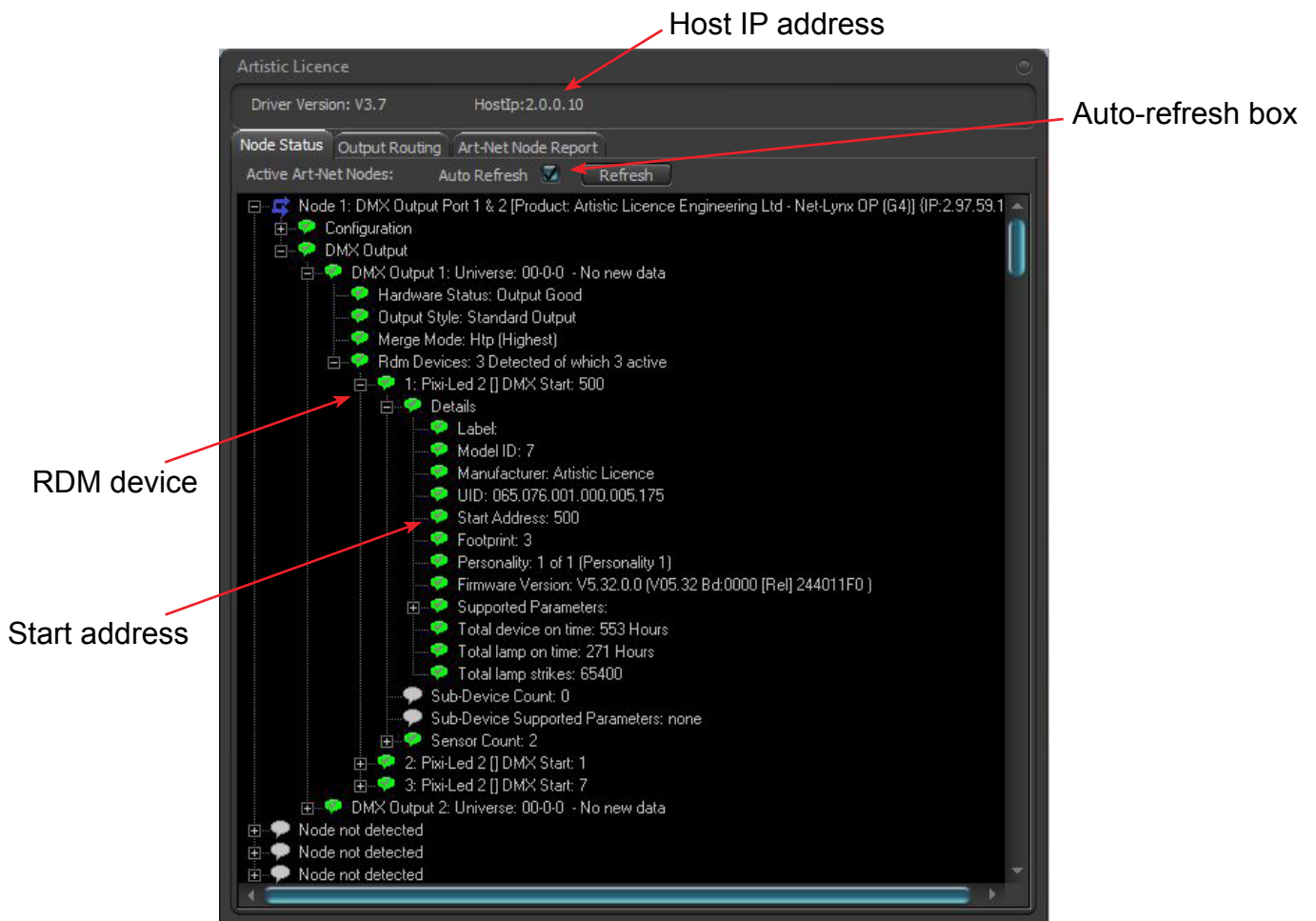


Figure 2: Expanded node list



Figure 3: Start address dialogue box



## DMX & RDM: Setting a start address with DMX-Workshop

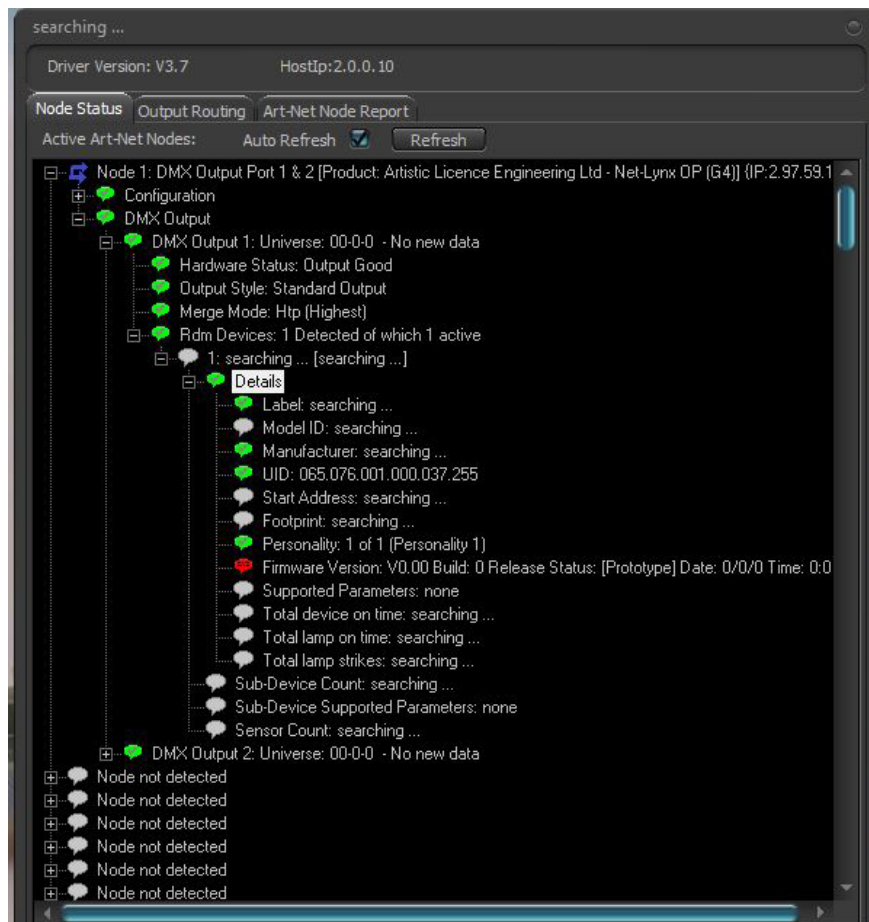


Figure 4: Node list appearance if PC firewalls are enabled or RDM is disabled

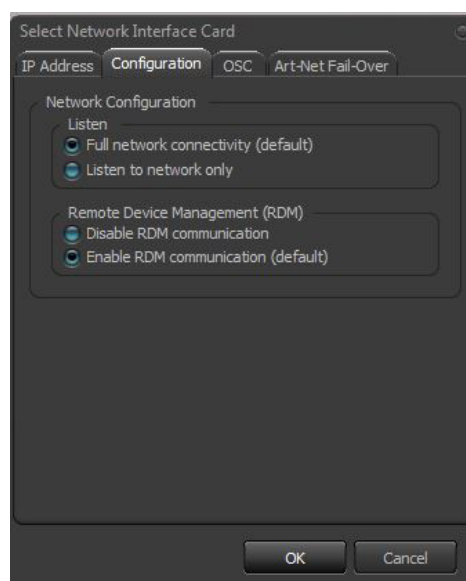


Figure 5: Configuration tab in NIC menu. Ensure RDM is enabled.