

Application Notes



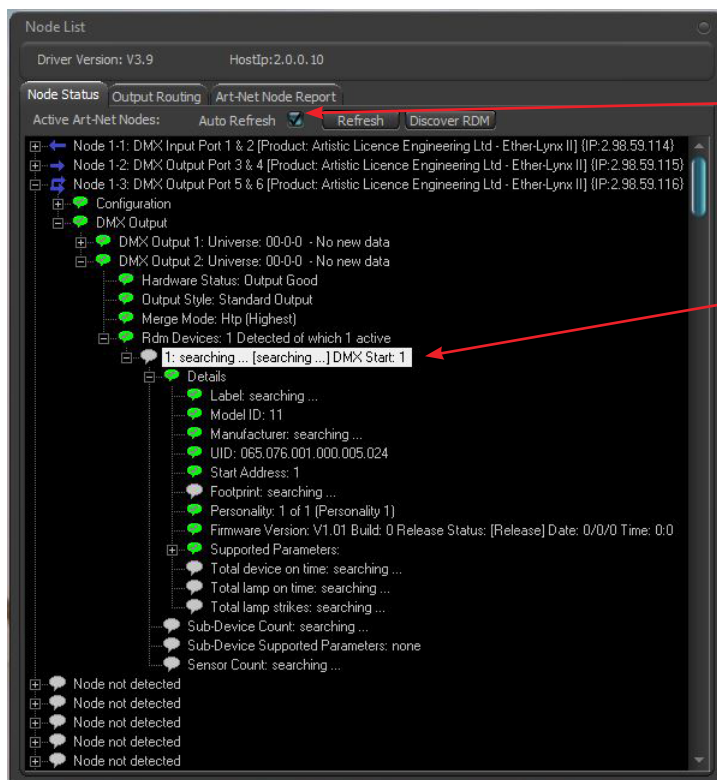
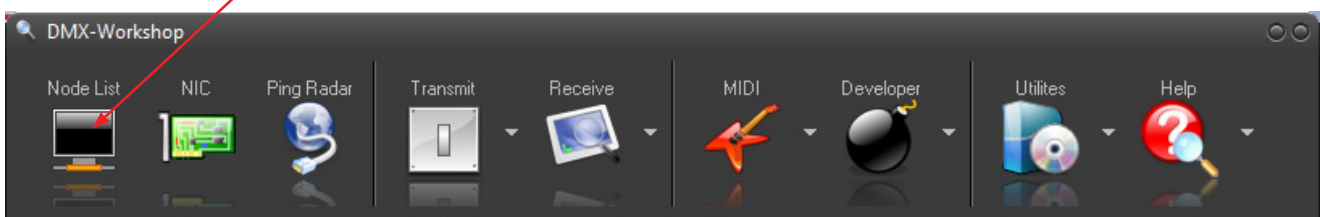
Upgrading firmware in Jump-Start

Equipment required:

- PC running DMX-Workshop
- Artistic Licence Art-Net to DMX/RDM converter (e.g. Art-Lynx O/P or Net Lynx O/P)

Procedure:

1. Connect the Art-Net to DMX/RDM converter to the PC running DMX-Workshop
2. Turn on the Jump-Start and press the 'SET' button until it displays the 'SETUP' menu
3. Press the 'MODE' button until the menu option 'FIRMWARE UPLOAD' is displayed
4. Press the 'LEFT' and 'RIGHT' buttons together until a single dot is displayed
5. Connect the Jump-Start to one of the outputs of the converter
6. Run the DMX-Workshop application ensuring that the PC has the correct type of IP address, i.e. 2.x.x.x (Sub-Net 255.0.0.0)
7. Click the Node List button in the menu bar



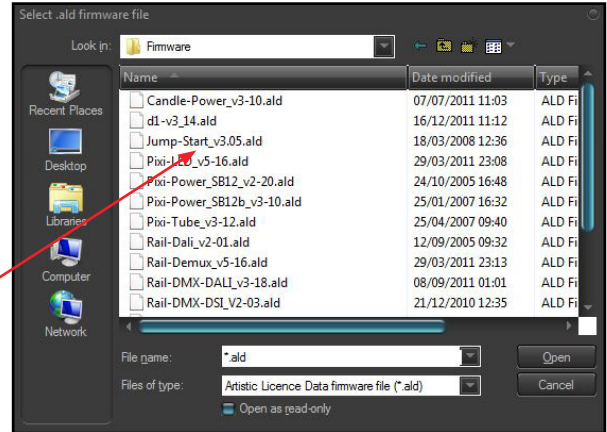
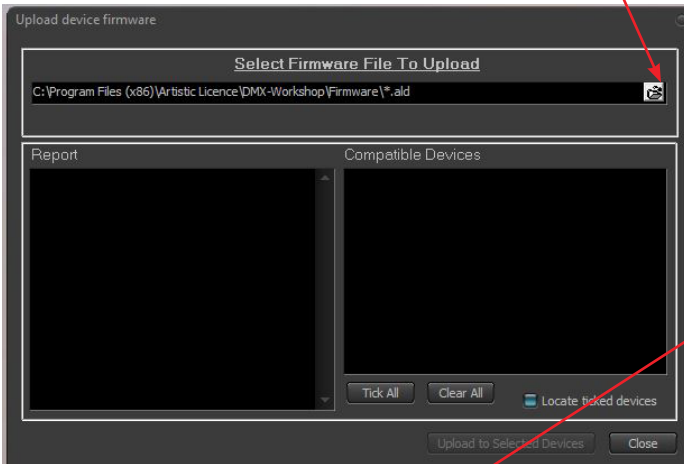
8. This will display a new window containing a list of Art-Net nodes (ensure that the Auto-Refresh box is ticked).

9. Expand the details to see the RDM Devices on the output of the converter. Right-click on any entry below 'Rdm Devices' and select 'Advanced', then 'Artistic Licence Products', then 'Upload firmware'.

Application Notes

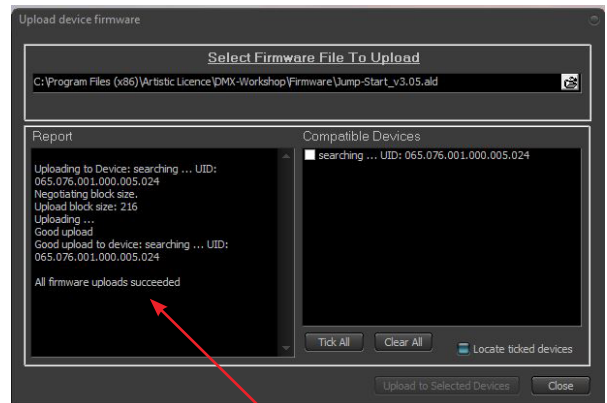
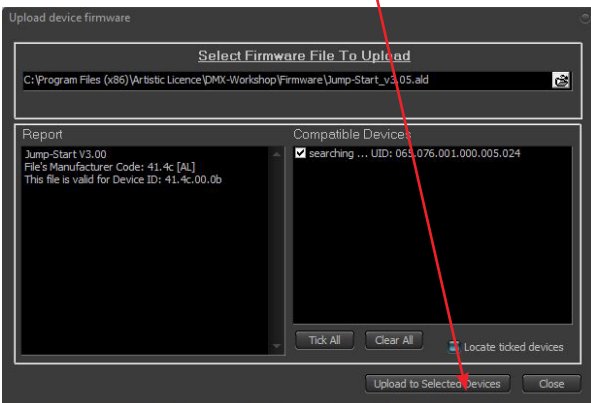


10. In the next window, click on the folder icon to navigate to the firmware upload folder.



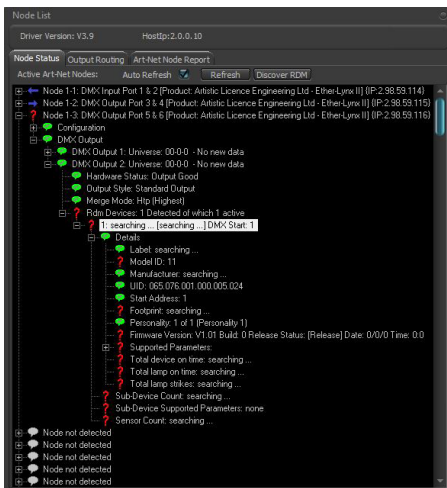
11. Open the desired file

12. Then click 'Upload to Selected Devices'



13. A successful firmware upload should be verified in the Report field after a short delay.

14. The Jump-Start can now be disconnected from the converter and is ready to use.



Note: after a successful firmware upload, the Jump-Start will reboot, causing red question marks to appear in the DMX-Workshop node list (see opposite). This is normal and does not indicate a fault with the process.

